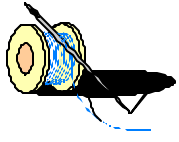


INSPIRATION POINT BIBLE CAMP RETREATS

Quilt, Scrap & Stamp: March 26-28 & April 9-11



Women's Retreat: April 23-25

Father & Son Fishing: May 7-8



Hands 2 Help 4 May 7-8



www.ipoint.org or see Bulletin Board



Out To Lunch Bunch
Meets Friday, March 26th, 1:00 pm
Perkins, 13th Ave. & I-29
RSVP by March 25th.

Join us for



6:30 pm - Wednesdays
Liberty Lutheran Church
Preschool through Grade Six!

Bring your friends as we study God's Word!

Our Mission

Liberty Lutheran Brethren Church exists to call individuals to faith in Jesus Christ, to guide them to freedom in Christ, to equip them for presenting a message of hope to the surrounding community, and to support the worldwide ministries of the Church of the Lutheran Brethren.

Liberty Light

March, 2010

Volume 21 Number 3

www.LibertyLB.org



THE SIGN OF JONAH

During our Lenten series we have focused on the life and ministry of Jonah. Like Jonah we may discover we are prone to close our ears to God's orders. We become inclined to head the opposite direction, to do the opposite thing, to want it our way and in the end there's loss.

In this brief book the story seems to end too suddenly. We want more of a resolution. We want, as Paul Harvey used to do, give us the rest of the story. When we come to end of the book we see a plant comes, a worm devours and anger is rekindled. God makes His case for grace, but we wonder did Jonah learn it and receive it? Will the problem continue unresolved or is this pause in the story that's continued and resolved by One far greater? When we end this month of March the last Sunday begins a journey with Christ through His final earthly week. As God showed Himself compassionate to the self righteous, so my prayer is that we will open our hearts to a spirit of repentance and again understand and receive the compassion of our Lord.

When we've completed the book of Jonah consider reading it again. Then read Luke 23 and Job 38:4-7. Discover that one greater than Jonah has come. It is Jesus the Christ.

The tomb kept Him no more than three days. He is raised from death and opens the way for us to eternal life. May your prayer and mine be that we will learn from the sign of Jonah the new life given to us by Jesus Christ's death and resurrection to be lived out as a witness of His undying grace. Learn, live and grow.

Bible Camp Registration is coming fast!

We want to assist with scholarships and complete early registrations Please notify Tammy Torgerson or Pastor Vesta of your intent to attend camp.



Remember an offering for Bible Camp Scholarships will be received at our Easter breakfast.



Ladies,
Please collect loose change for Women's Ministries at the Church Of the Lutheran Brethren. Begin now and bring your change to the March 4th LIFT meeting. Those unable to attend the March 4th LIFT may bring their change to the church through March 14th.

Ladies In Fellowship Together

All ladies are invited to our monthly Bible Study on the first Thursday of every month.

Thursday, March. 4th.

7:00 p.m.

"God's Mystery"
Ephesians 3



Holy Week Service Schedule

April 2, Good Friday

7:00 p.m. Service with Communion

April 4, Easter Sunday

7:30 a.m. Sing & Praise

8:00 - 9:00 a.m. Breakfast

Breakfast is served by the Education Committee.

With offering for camp scholarships—Matching funds of up to \$500 have been provided by an anonymous donor. Praise God!

Generous giving will enable us to support students attending camp.

9:30 a.m. Easter Worship

JAMESTOWN WORLDVIEW CONFERENCE

SATURDAY, APRIL 10, 2010

Admission: \$25.00

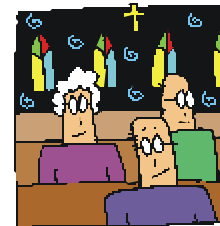
Speakers:

Peter Marshall and John Njorge

Jamestown College Reiland

Fine Arts Center

Info@findvictory.org



Quarterly Congregation Meeting
Wed., April 7th 6:30 p.m.
Election of Delegates to
District and Annual Meetings